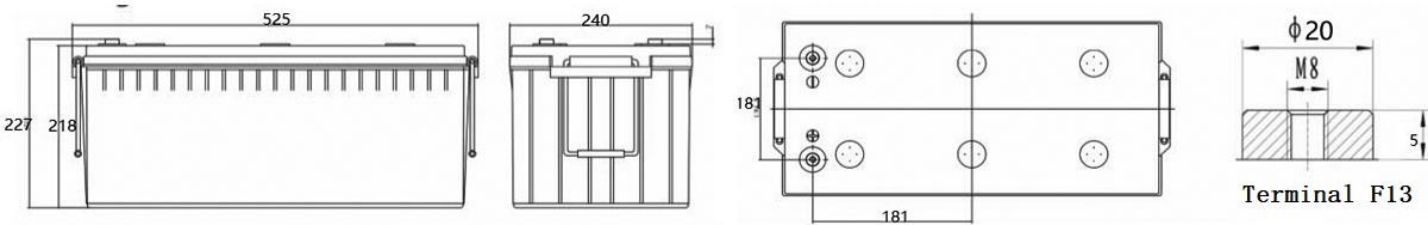


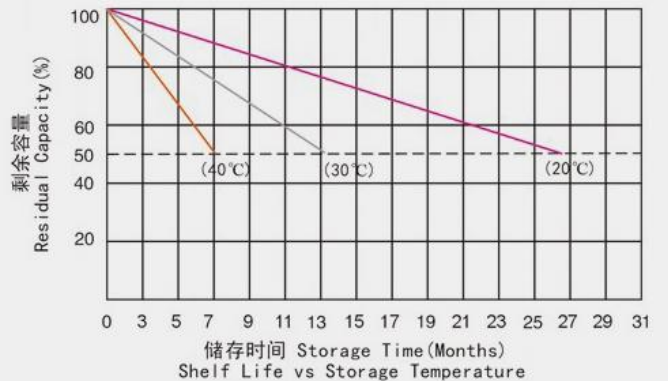
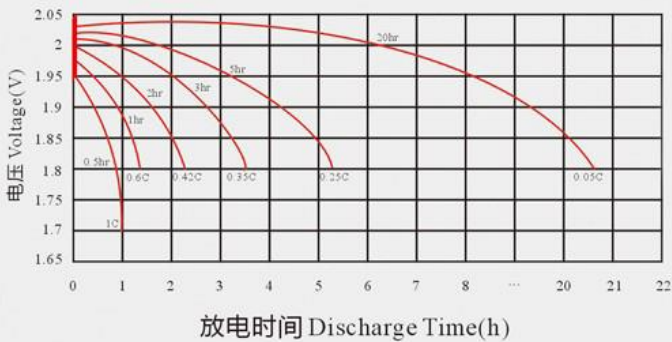
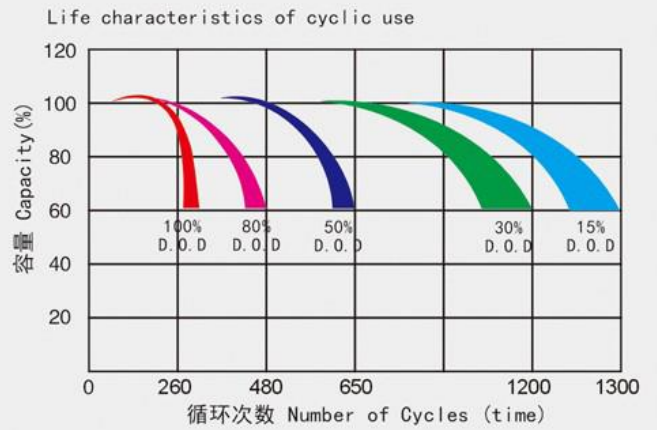
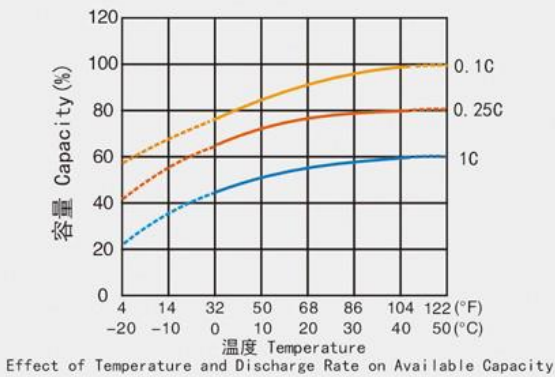
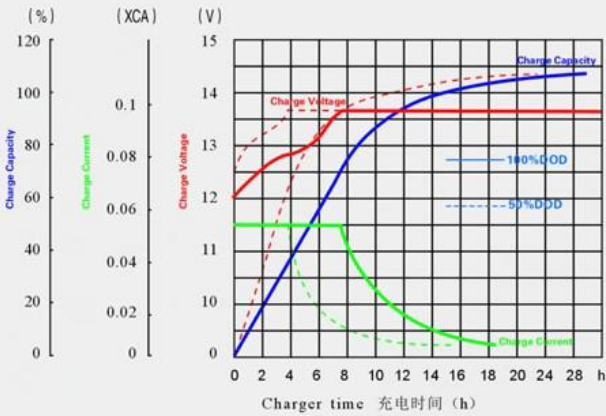
Dimension:L525\*W240\*H220 (TH227) mm



## Specification

Battery Model	6-GFM-200(12V200AH)		
Nominal Voltage	12V	Rated Capacity	200Ah (20hour rate) to 10.80V/cell @25°C(77°F)
Typical Weight	55kg	Internal Resistance	Approx 5.5mΩ
Operating Temperature Range	Operation ( maximum) :		-40°C to 55°C(-40°F to 131°F)
	Operation ( recommended) :		15°C to 25°C(59°F to 77°F)
	Storage:		-20°C to 40°C(-4°F to 104°F)
Float Voltage	13.5--13.8V/cell@25°C(77°F)		
Charge Current	20.0A(Recommendation) 40.0A(Max)		
Equalize and Cycle Service	14.6V~14.8.V/cell@25°C(77°F)		
Self Discharge	The residual capacity is above 94% after 90 days storage(25°C/77°F)		
Terminal	M8Female Large Size Copper Post		
Terminal Hardware Torque	M5	6---7 ± 1.0Nm	
	M6	8---10 ± 1.0Nm	
	M8	10---15 ± 1.0Nm	
Container Material	ABS (V0 optional)		

## Performance Curve



## Discharge Data

### Constant Current Discharge Characteristics (A, 25 °C)

F.V/TIME	5min	10min	15min	30min	60min	2h	3h	5h	8h	10h	20h
9.60	516	396	310	208.0	126.0	77.1	53.8	36.5	24.36	20.30	10.66
9.90	501	384	303.8	203.8	123.5	76.8	53.5	36.4	24.24	20.20	10.61
10.2	490	376	297.6	199.7	121.0	76.0	53.0	36.0	24.14	20.12	10.56
10.5	475	364	288.3	193.4	117.2	75.2	52.5	35.6	24.06	20.05	10.53
10.8	402	354	282.7	189.7	114.9	74.5	51.9	35.3	24.00	20.00	10.50

### Constant Power Discharge Characteristics (Watt, 25 °C)

F.V/TIME	5min	10min	15min	30min	60min	2h	3h	5h	8h	10h	20h
9.60	5418	4277	3404	2334	1436	893	633	432	292.3	242.4	127.9
9.90	5255	4148	3336	2287	1408	889	630	430	290.9	241.2	127.3
10.2	5147	4063	3268	2240	1379	880	623	426	289.7	240.2	126.8
10.5	4985	3935	3166	2170	1336	871	617	421	288.7	239.4	126.3
10.8	4226	3819	3104	2128	1310	862	611	417	288.0	238.8	126.0

### Note:

The above data are only taken as reference instead of inspection standard. Additional notification won't be available for parameter change due to improvement and regulation of product. Inspection shall be performed in accordance with standards.

We must make a statement, when the battery service life and safe operating performance is confirmed, the test condition will be stricter; accordingly, the battery shall not be used in these conditions, because it's difficult for battery to reach expected service life.